

## GSDYHU Heavy Duty Casters

### Features

- Thrust bearing and tapered bearing at swiveling part of swivel type caster provide excellent swivel performance
- Small play between body and wheel reduces noise
- Anti-static urethane wheel prevents dust from adhering

### Notes

- Operating temperature: -10°C ~ 60°C
- Advisable to use at speeds less than 4km/h



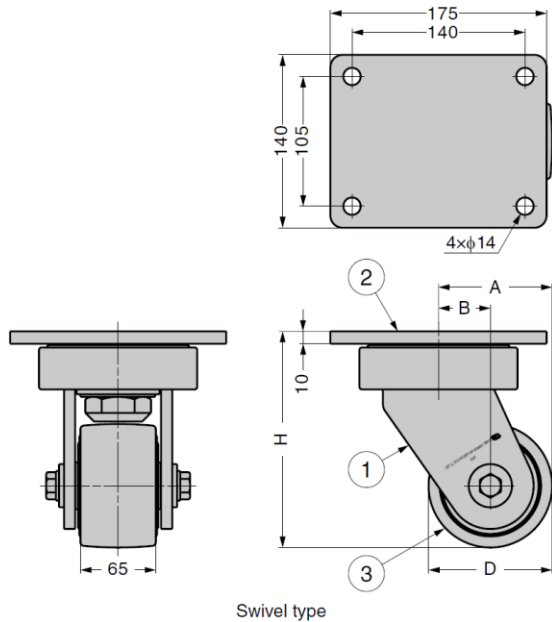
Swivel type

Non-swivel type

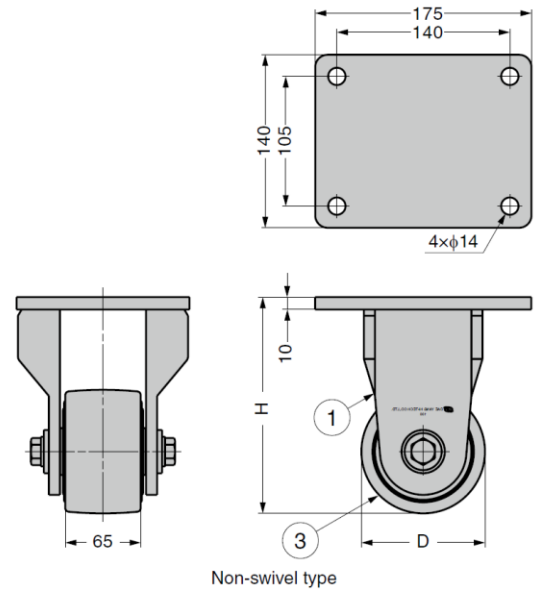
No.	Part Name	Material	Finish/Colour
①	Body	Steel	Black Chromate
②	Plate		
③	Wheel	PUR	Yellow

### Urethane Roller Physical Properties

	Test Result	Test Method
Hardness	95	ASTM D-2240
Tensile Strength	40MPa	ASTM D-412
Elongation	350%	
Tear Strength	10MPa	ASTM D-624



Swivel type



Non-swivel type

### Swivel Type

Part No.	D	H	A	B	Load Capacity (per piece)	
GSDYHU-100SF	100	175	92	42	6,860 N	700 kg
GSDYHU-125SF	125	198	111	48	10,290 N	1,050 kg
GSDYHU-150SF	150	222	125	50	14,210 N	1,450 kg
GSDYHU-200SF	200	270	160	60	17,150 N	1,750 kg

### Non-Swivel Type

Part No.	D	H	Load Capacity (per piece)	
GSDYHU-100RF	100	175	6,860 N	700 kg
GSDYHU-125RF	125	198	10,290 N	1,050 kg
GSDYHU-150RF	150	222	14,210 N	1,450 kg
GSDYHU-200RF	200	270	17,150 N	1,750 kg